

ITEM NO: FL-0252



● PRODUCT DESCRIPTION:

The high lumen LED sport light features the largest cooling area and best heat dissipation on the market, the fixture can last over 70,000 hours . waterproof and use UL rated IP65 Meanwell Driver . With different beam angles and bracket, it can be used as flood light, spot light, high bay , etc .

● APPLICATION:

Ideal for sport lighting, high mast lighting, light towers, security, warehouse, architectural, stadium, playground , youth spots, golf driving ranges and all around outdoor lighting.

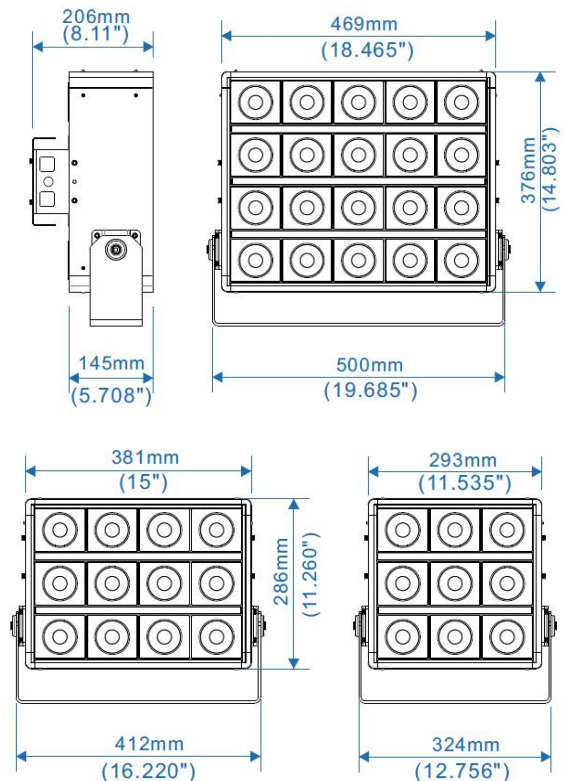
● KEY FEATURES:

- Extruded aluminum Modular housing design
- 70000 hours life span
- High performance heat sinks
- System efficacy greater than 145lm/W.
- Easy installation and free maintenance

● PRODUCT SIZE:

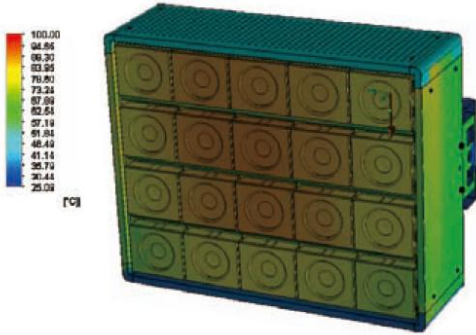
- ETL Listed
- IP65 rated, Suitable for wet location
- CE compliant

● PRODUCT SIZE:



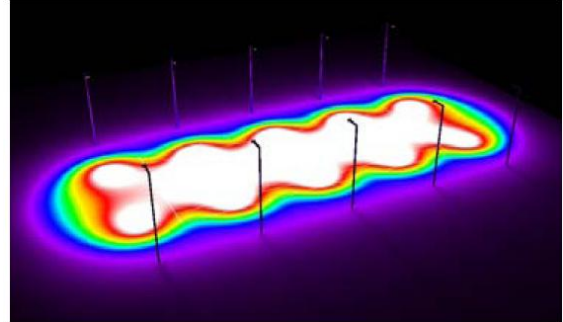
Superior thermal management

An even heat distribution and lower temperature rise



Superior lighting performance

Outperforms conventional design



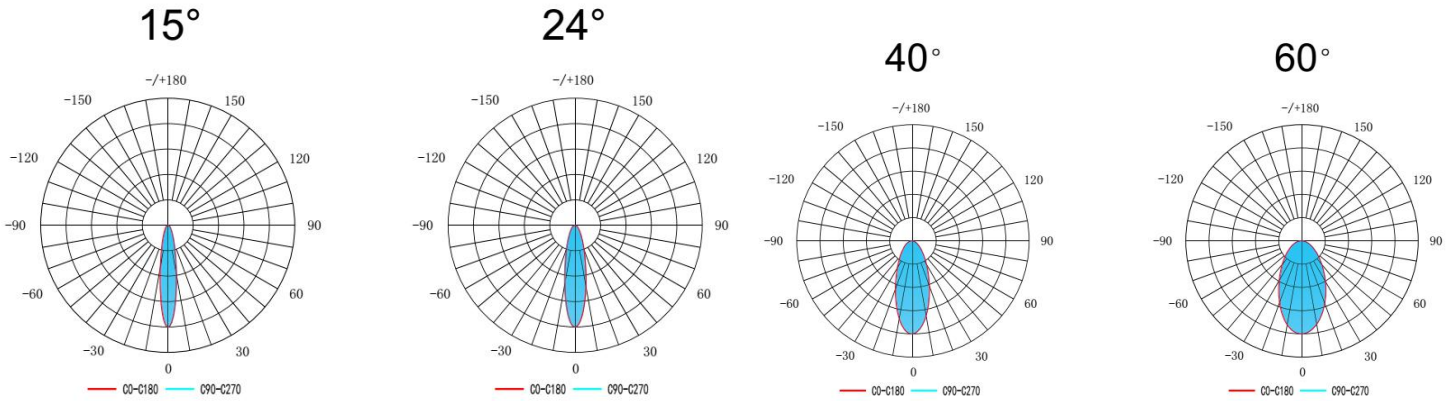
● ENERGY AND PERFORMANCE DATA:

Item No	FL-0252-100W	FL-0252-150W	FL-0252-200W	FL-0252-300W	FL-0252-400W	FL-0252-500W
Lumens	14500 lm	21750 lm	29000 lm	43500 lm	58000 lm	72500 lm
Power	100W	150W	200W	300W	400W	500W
Efficacy	145lm/W					
CCT	3000K , 4000K , 5000K , 5700K					
CRI	≧ Ra80					
Beam Angle	15° 24° 40° 60°					
Input Voltage	120-277VAC , 347VAC , 480VAC					
IP Rating	IP65					
Driver	Splendid Meanwell					
Operating Temperature	-25° ~ 60°					

● CONTROL OPTIONS:

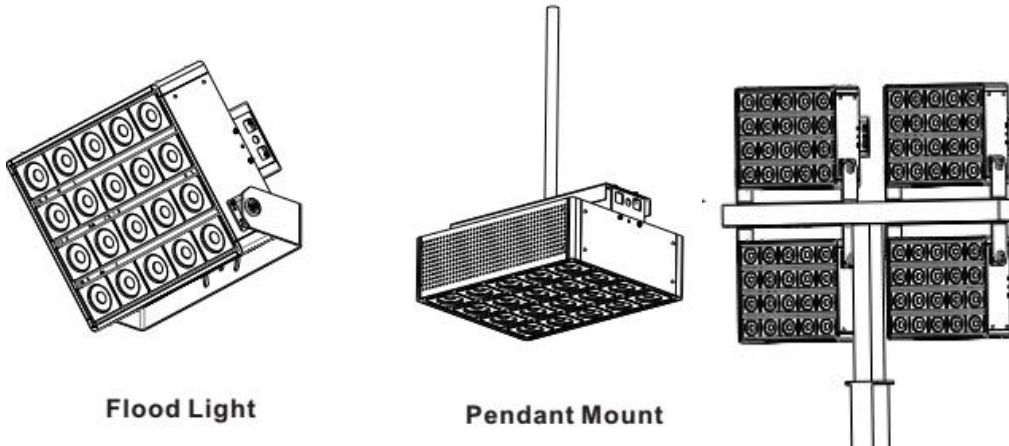
Occupancy Control	1-10VDC, PWM Dimming Control
-------------------	------------------------------

LUMINANCE CHARTS:



MOUNTING OPTIONS:

- Trunnion Bracket Mount
- Pendant Mount
- Combined Mont.



WARRANTY

5-year limited warranty.

Actual performance may differ as a result of end-user environment and application.

Note: Specifications subject to change without notice