

ITEM NO: SP-AS8004-D-F**Description:**

This LED light fixture encompasses the latest technological advances in the design of LED chips and light fixtures that house them, it can be customized for virtually any type of outdoor lighting application by applying one of several different mounting options to a universal body to create an Area, Flood, Spot or Wall Pack luminaire (sold separately).

Application:

Suitable for any general purpose floodlighting and spot lighting application.

Key Features:

- Die-cast aluminum housing..
- High performance fin heat sinks
- System efficacy greater than 115lm/W.
- Uniform and energy conscious illumination
- Easy installation and free maintenance
- 50000 hours life span
- 5 Years Warranty

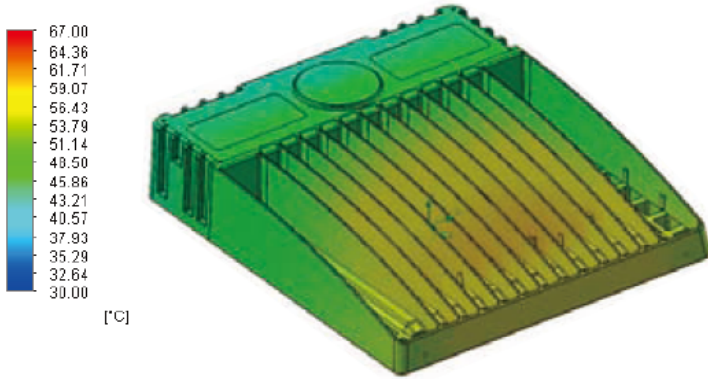
Qualifications:

- ETL Listed
- IP67 rated, suitable for wet location
- CE & EMC compliant
- DLC listed

Product Size:

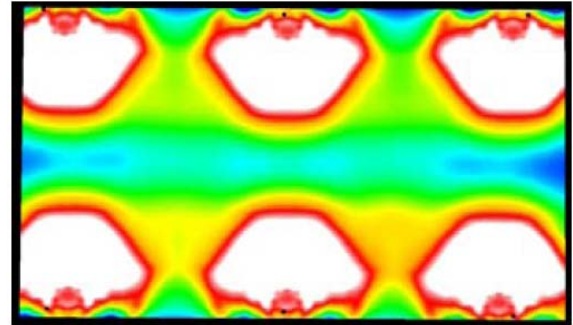
Superior thermal management

An even heat distribution and lower temperature rise



Superior lighting performance

Outperforms conventional design



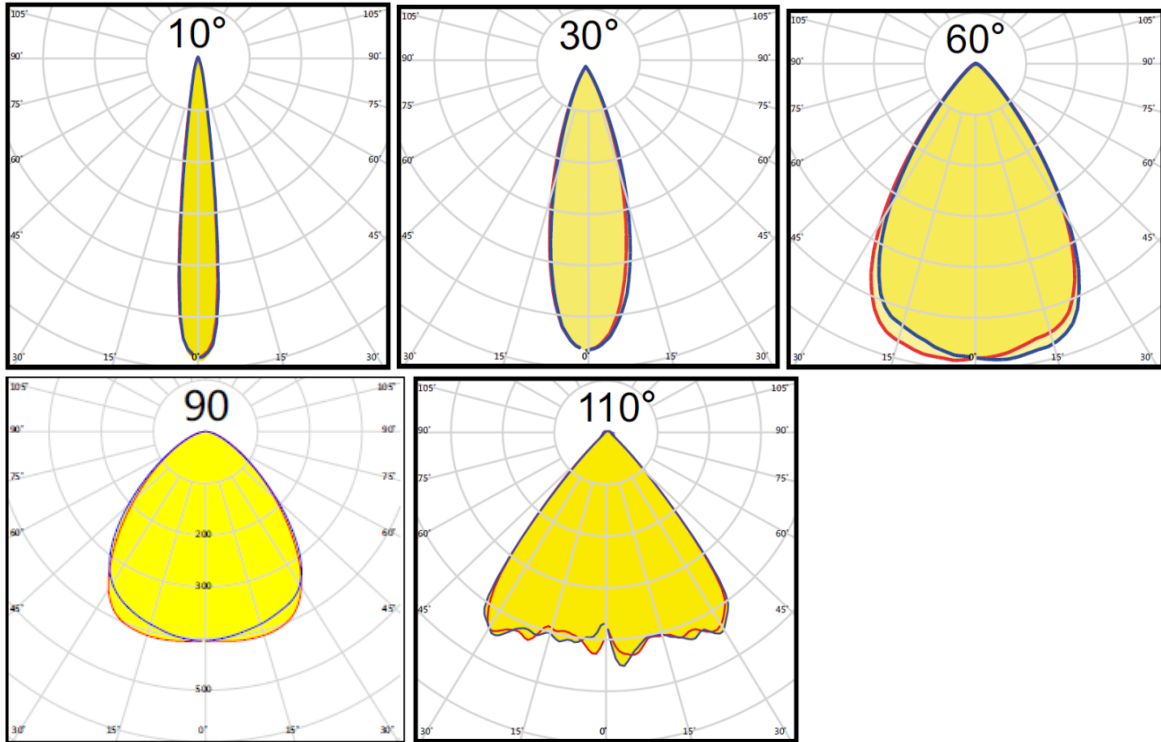
Energy and performance data:

Item No	SP-AS8004-C-F
Lumens	6900lm
Power	60W
Efficacy	115 lm/W
CCT	3000K , 4000K , 5000K , 5700K
CRI	≧ Ra80
Input Voltage	120-277VAC , 347VAC , 480VAC , 12V-24VAC/DC
IP Rating	IP67
Life Span	50000 hours
Warranty	5 Years
Qualification	ETL ,CE, DLC, EMC
Operating Temperature	-25° ~ 60°



Control Options:

Occupancy Control	1-10VDC, PWM Dimming Control	Day Light Sensor Control
-------------------	------------------------------	--------------------------

Illuminance Charts:



Mounting Options:

U Bracket	Knuckle Mount
	

Warranty:

5-years limited warranty.

Note: Specifications subject to update without notice